

**NYPD Emerald Society  
Winter Weekend  
February 16-20, 2017  
Reservation Form**

Name \_\_\_\_\_

Address \_\_\_\_\_

City \_\_\_\_\_

State \_\_\_\_\_ Zip \_\_\_\_\_

Phone \_\_\_\_\_

# of Adults \_\_\_\_\_

# of Children \_\_\_\_\_ # of Teens \_\_\_\_\_

Email Address \_\_\_\_\_

Room(s) Near Party of \_\_\_\_\_

check desired room type  
Standard ( ), 1 Bdrm Suite ( ), 2 Bdrm Suite ( )

Accommodations Desired 2nd Choice \_\_\_\_\_

Enter date of arrival and date of departure  
Arrival February \_\_, 2017 - Departure February \_\_, 2017

**A \$50.00 PER ROOM DEPOSIT IS REQUIRED WITH RESERVATION**

**ALL RESERVATION TO BE MADE THROUGH NYPD EMERALD SOCIETY**

Make Checks Payable to: Villa Roma Resort  
Mail to: Chairman Tom Sullivan  
132 Greencroft Avenue Staten Island, NY 10308-3040

**Directions to Villa Roma**

**From New York and Metropolitan Area**

(2 Hours) George Washington Bridge to New Jersey Palisades Parkway to New York Thruway North. Proceed on Thruway to Exit 16 and proceed west on Route 17 to Exit 104. Route 17B (Raceway Road). Go West to Cochection 17 miles, at the blinking light turn right at the intersection on Route 17B West and 52A, then follow the signs to the Villa Roma.

**From Binghamton, Rochester and Upstate Area**

Interstate Highway 490 South to the New York Thruway (90) East. In Syracuse leave Route 90 for Interstate 81 South to Binghamton. Here pick up Route 17 East (Quickway) to Hancock Exit Route 97. Follow this to Callicoon. Turn left at traffic light before bridge onto 17B which becomes Route 52. Follow the signs to the Villa Roma.

**From Connecticut**

Route 84 West to Route 17, West to Exit 104, Route 17B (Raceway Rd.) Go West 17 miles to Cochection turn right at the blinking light at the intersection of Route 17B West and 52A, follow the signs to Villa Roma.

**From Southern New Jersey and Philadelphia**

New Jersey Turnpike to Exit 11 Garden State Parkway North to New York State Thruway North. Leave Thruway at Exit 16 and proceed to Route 17 to Exit 104, Route 17B (Raceway Rd). Go West to Cochection 17 miles, there turn right at the blinking light at the intersection of Route 17B West and 52A. Follow the Villa Roma signs.

**From Boston and the New England States**

Mass. Turnpike to Sturbridge Exit. Route 86 South to Route 84 West. Proceed to New York Exit 4W to Route 17 Quickway West to Exit 104. Route 17B (Raceway Rd.) Go West to Cochection 17 miles, at blinking light turn right at the intersection of Route 17B and 52A, then follow signs to Villa Roma.

**From Albany Area**

Take New York State Thruway to Exit 19 (Kingston Exit) Take 209 South to Ellenville. Take Route 52 West to Jeffersonville. Then follow signs to Villa Roma.

**From Stewart International Airport**

Follow signs to Route I-84 (left on Rte 207 East 9 mi., left on Rte 300 N. 2.1 mi.) Route I-84 West to Middletown (Exit 4) and Route 17, West to Exit 104, route 17B (Raceway Rd). Go West to Cochection 17 miles. At the blinking light turn right at the intersection of Route 17B and 52. Follow signs to Villa Roma.



**NYPD  
Emerald Society**

**52<sup>nd</sup> Annual  
Winter Weekend**

**February 16-20, 2017**

## Room Rates February 17-19, 2017

### Traditional

Double Occupancy .....	\$435.00
Triple Occupancy .....	\$410.00
Single Occupancy .....	\$620.00

### One Bedroom Suites

Double Occupancy .....	\$535.00
Triple Occupancy .....	\$503.00
Single Occupancy .....	\$770.00

### Two Bedroom Suites

Double Occupancy .....	\$635.00
Triple Occupancy .....	\$596.00
Quad Occupancy .....	\$577.00

Children sharing room with adult(s)  
in any accommodation

Children 0-14 Up to 3 per room.....	FREE
Children 15-17 .....	\$100.30

## Early Arrival Rate

Thursday Only, February 16, 2017

### Traditional

Double Occupancy .....	\$117.00
Triple Occupancy .....	\$111.00
Single Occupancy .....	\$167.00

### One Bedroom Suites

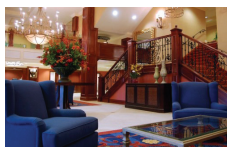
Double Occupancy .....	\$117.00
Triple Occupancy .....	\$111.00
Single Occupancy .....	\$167.00

### Two Bedroom Suites

Double Occupancy .....	\$117.00
Triple Occupancy .....	\$111.00
Single Occupancy .....	\$167.00

Children sharing room with adult(s)  
in any accommodation

Children 0-14 Up to 3 per room.....	FREE
Children 15-17 Up to 1 per FREE all other.....	\$50.15



Main Lobby



Main Dining Room

## Room Rates February 17-20, 2017

### Traditional

Double Occupancy .....	\$535.00
Triple Occupancy .....	\$505.00
Single Occupancy .....	\$755.00

### One Bedroom Suites

Double Occupancy .....	\$635.00
Triple Occupancy .....	\$598.00
Single Occupancy .....	\$905.00

### Two Bedroom Suites

Double Occupancy .....	\$735.00
Triple Occupancy .....	\$693.00
Quad Occupancy .....	\$662.00

Children sharing room with adult(s)  
in any accommodation

Children 0-14 Up to 3 per room.....	FREE
Children 15-17 .....	\$150.45

**\*RATES ARE PER PERSON AND  
INCLUDE TAXES AND GRATUITIES**

## For Additional Information Contact

Tom Sullivan (718) 967-9146

nypdemeraldsweb@aol.com

Sean Patterson (718) 351-7824

shamrck73@aol.com

**ALL RESERVATIONS TO BE MADE  
THROUGH TOM SULLIVAN, NYPD  
EMERALD SOCIETY**



Mezzanine Bar



Cappuccino & Gelato Bar

## Rates include

- Entertainment Including A Band of Rogues, The Garda Band, & Sean Cosgriff NYPD Emerald Society Pipes & Drums, and Late Night DJ!
- Three meals daily starting with dinner on arrival, ending with lunch on departure
- Welcome reception & cocktail party
- Complimentary beer, wine & soda in hospitality room
- Sunday Mass
- Winter Sports including skiing, tubing, ice skating (nominal fee apply)
- Resort activities including BINGO, turtle racing, bocce tournaments, Mock Horse Racing and more
- Activities with Anthony & a hilarious visit from Macaroni the Clown
- Young Irish Musician & Singer Shows
- Indoor sports complex with bocce, shuffleboard, ping pong, pool tables, video games
- Indoor swimming pool, hot tub & sauna
- 5000 sq ft fitness center

## Rates do not include:

- Indoor Tennis Center featuring tennis, handball and racquetball
- Bowling on our eight (8) regulation bowling lanes
- Horseback riding and paintball
- Lift tickets for skis, snowboarding and snow tubing
- Equipment rental for skiing & snowboarding
- Ice Skating & Ice Skate Rental
- Spa services
- Trip to the Woodstock museum at Bethel Woods



Marty's Lounge



Roman Gardens Cafe